



Company : Santos

Well : Netherby 1DW1

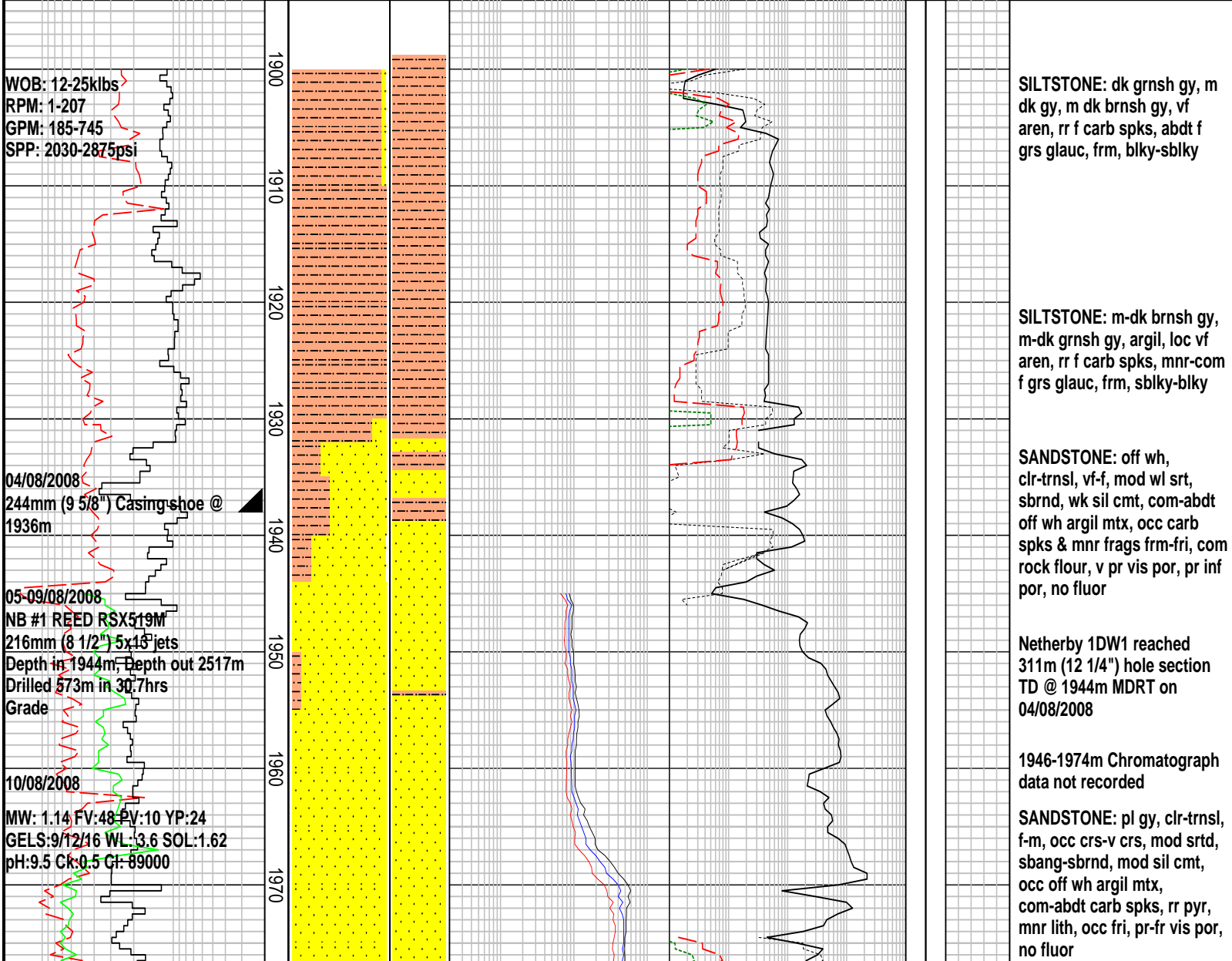
Interval : 1900.00 - 2517.00 meters

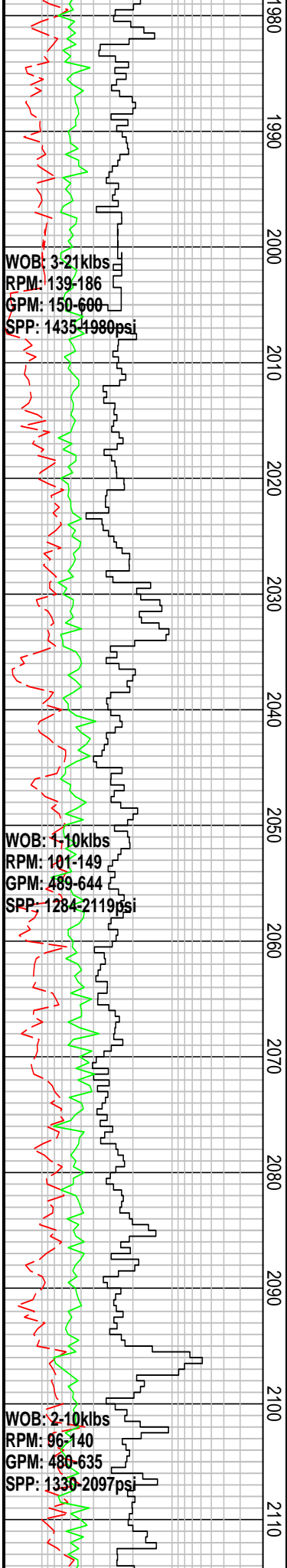
Created : 12/Aug/2008 4:43:41 AM

INTEQ

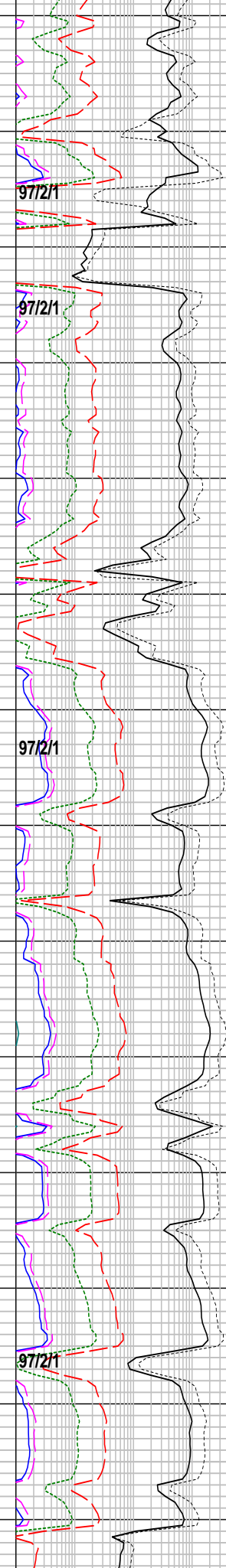
FORMATION EVALUATION LOG

WOB		MD meters 1:500	LITHOLOGY %	INTERPRETED LITHOLOGY	RESISTIVITY			CHROMATOGRAPH				CUT FLUORESCENCE	CALC	REMARKS					
ROP					Resistivity (shallow)	Total Gas			DIRECT FLUORESCENCE	PGF	PGF								
Gamma					2 20 200 OHMM	1 10 100 1000 unit	Methane	Ethane							Propane	i-Butane	i-Pentane	n-Butane	n-Pentane
GAPI					2 20 200 OHMM	ppm													
		2 20 200 OHMM																	





1980
1990
2000
2010
2020
2030
2040
2050
2060
2070
2080
2090
2100
2110



Survey @ 1973.95m
Incl: 83.6deg Azi: 122.37deg

SANDSTONE: clr-trnsl, mnr pl gy, f-m, wl srt, ang-sbang, mnr sbrnd, wk sil cmt, rr off wh argil mtx, occ carb spks & frags, mnr lith, lse clr grs, fr-gd inf por, no fluor

Survey @ 2011.18m
Incl: 87.85deg Azi: 121.02deg

SANDSTONE: clr-trnsl, mnr off wh-pl gy, f-m, rr crs, wl srt, sbang-dom sbrnd, wk sil cmt, rr off wh argil mtx, mnr carb spks, rr pyr nod, gen lse cln grs, fr-gd inf por, no fluor

Survey @ 2031.41m
Incl: 89.37deg Azi: 120.87deg

SANDSTONE: clr-trnsl, f-occ m, mod srt, sbang-dom sbrnd, wk sil cmt, occ-com off wh-pl gy argil mtx, mnr lith & carb spks, lse, fri, pr-fr inf por, no fluor

Survey @ 2060.00m
Incl: 89.80deg Azi: 121.67deg

SANDSTONE: clr-trnsl, pl gy-off wh, f, occ m i/p, wl srt, sbang-sbrnd, wk sil cmt, occ off wh-pl gy argil mtx, mnr carb spks & lith, lse, mnr fri, pr vis por, fr inf por, no fluor

Survey @ 2089.29m
Incl: 89.46deg Azi: 120.38deg

SANDSTONE: clr-trnsl, mnr pl gy, f-m, wl srt, dom sbang-sbrnd, wk sil cmt, mnr pl gy argil mtx, mnr lith & carb spks, rr pl orng grs, lse, mnr fri, pr vis por, fr inf por, no fluor

Survey @ 2112.91m

Incl: 89.48deg Azi: 119.43deg

SANDSTONE: wh, lt gy, trnsl, clr i/p, f-pred m gr, sbang-sbrnd, mod srt, abdt wh calc cmt, mnr lt gy argil mtx, tr pyr nod, tr orng & lt grn lith, mnr carb flks, fri-occ mod hd agg, pr vis por, 90% dull or mnrl fluor.

Survey @ 2148.38m
Incl: 93.04deg Azi: 121.22deg

2165-2182m
Geograph cable snapped

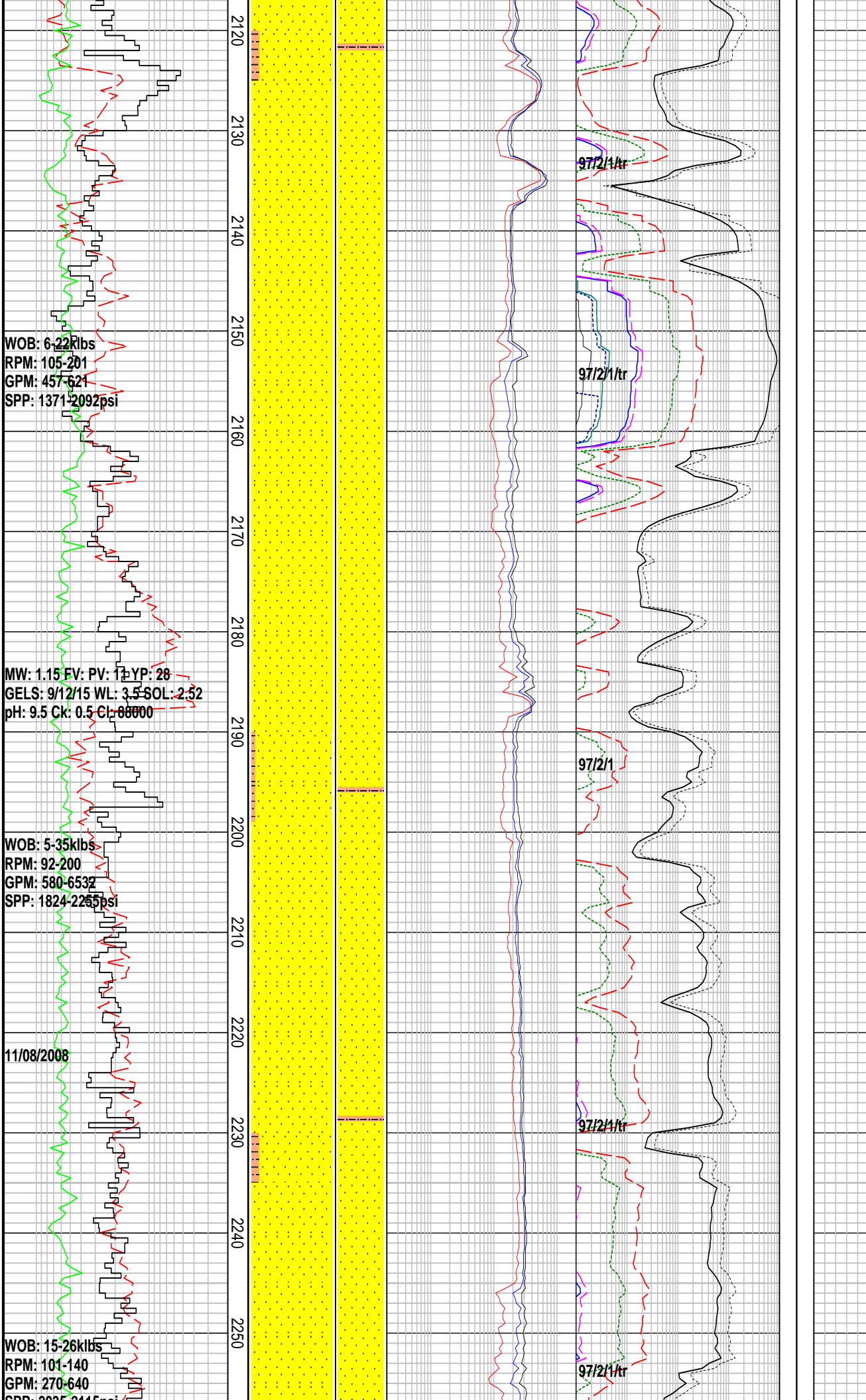
Survey @ 2117.62m
Incl: 94.65deg Azi: 120.61deg

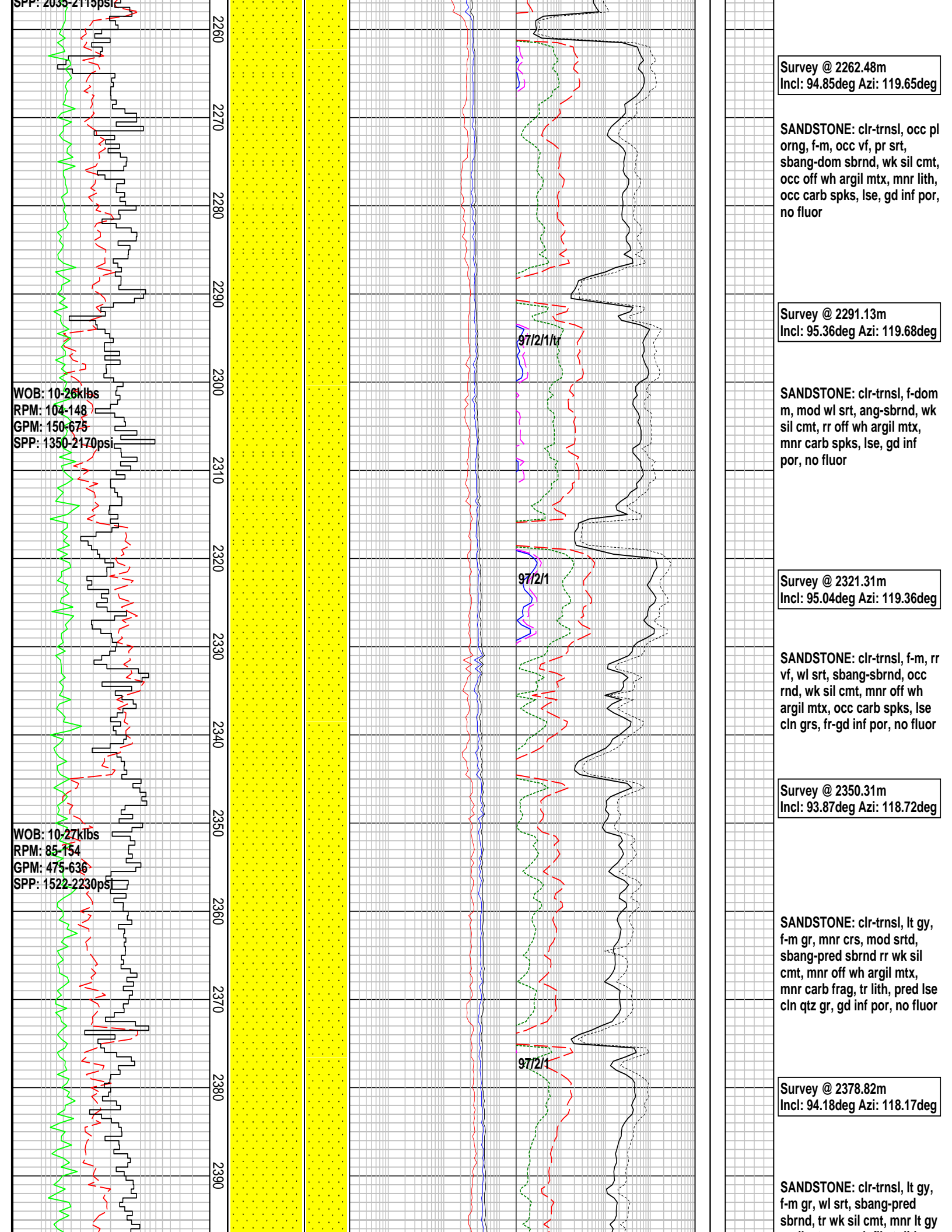
SANDSTONE: lt gy, clr-trnsl, f-m gr, sbang-sbrnd, wl srt, rr wk sil cmt, com calc cmt, mnr lt gy argil mtx com carb frag, tr nod pyr, tr lt grn & rd lith, rr biot flks, lse agg, mnr mod hd, f vis & f-g inf por, 30% dull or mnrl fluor.

Survey @ 2204.99m
Incl: 96.37deg Azi: 120.79deg

SANDSTONE: clr-trnsl, occ pl gy, m gr, mnr crs, ang-occ sbrnd, wl srt, wk sil cmt, occ-com carb spks, mnr lith, lse cln grs, fri-mod hd, pr-fr vis por, tr gd inf por, no fluor

SANDSTONE: clr-trnsl, off wh, vf-m gr, sbang-sbrnd, wl srt, occ-com off wh argil mtx, occ carb spks-frag, mnr orng lith, lse cln gr, pr-fr vis por, fr-gd inf por, no fluor





Survey @ 2262.48m
Incl: 94.85deg Azi: 119.65deg

SANDSTONE: clr-trnsl, occ pl
orng, f-m, occ vf, pr srt,
sbang-dom sbrnd, wk sil cmt,
occ off wh argil mtx, mnr lith,
occ carb spks, lse, gd inf por,
no fluor

Survey @ 2291.13m
Incl: 95.36deg Azi: 119.68deg

SANDSTONE: clr-trnsl, f-dom
m, mod wl srt, ang-sbrnd, wk
sil cmt, rr off wh argil mtx,
mnr carb spks, lse, gd inf
por, no fluor

Survey @ 2321.31m
Incl: 95.04deg Azi: 119.36deg

SANDSTONE: clr-trnsl, f-m, rr
vf, wl srt, sbang-sbrnd, occ
rnd, wk sil cmt, mnr off wh
argil mtx, occ carb spks, lse
cln grs, fr-gd inf por, no fluor

Survey @ 2350.31m
Incl: 93.87deg Azi: 118.72deg

SANDSTONE: clr-trnsl, lt gy,
f-m gr, mnr crs, mod srtd,
sbang-pred sbrnd rr wk sil
cmt, mnr off wh argil mtx,
mnr carb frag, tr lith, pred lse
cln qtz gr, gd inf por, no fluor

Survey @ 2378.82m
Incl: 94.18deg Azi: 118.17deg

SANDSTONE: clr-trnsl, lt gy,
f-m gr, wl srt, sbang-pred
sbrnd, tr wk sil cmt, mnr lt gy

WOB: 10-26klbs
RPM: 104-148
GPM: 150-675
SPP: 1350-2170psi

WOB: 10-27klbs
RPM: 85-154
GPM: 475-636
SPP: 1522-2230psi

97/2/1

97/2/1

97/2/1

2260
2270
2280
2290
2300
2310
2320
2330
2340
2350
2360
2370
2380
2390

WOB: 10-25klbs
RPM: 79-159
GPM: 610-620
SPP: 2144-2260psi

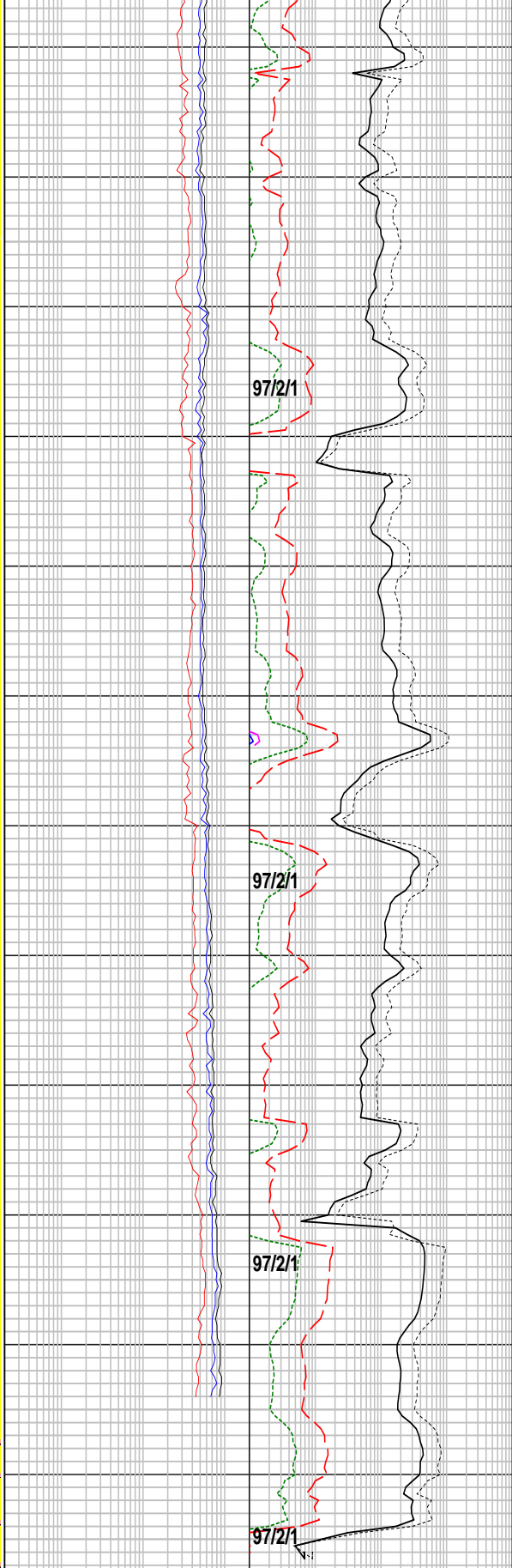
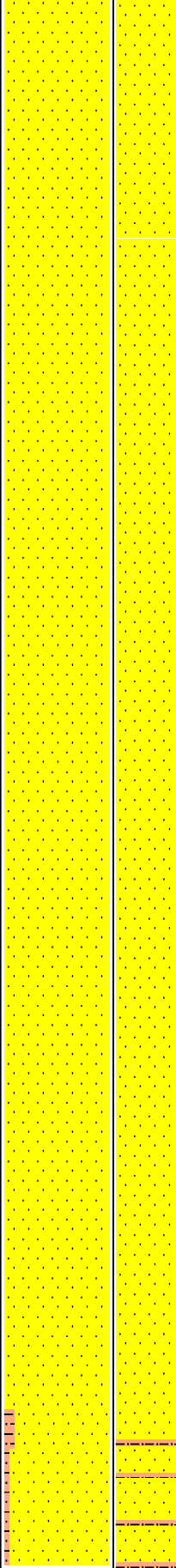
MW: 1.15 FV: 45 PV: 11 YP: 34
GELS: 10/14/16 WL: 3.6 SOL: 2.59
pH: 9.0 Ck: 0.5 Cl: 88000

WOB: 6-21klbs
RPM: 90-130
GPM: 496-630
SPP: 1813-2400psi

12/08/2008

WOB: 16-21klbs
RPM: 77-131
GPM: 50-710
SPP: 1510-2530psi

2400
2410
2420
2430
2440
2450
2460
2470
2480
2490
2500
2510
2520
2530



argil mtx, rr carb flk, tr lith,
pred lse cln qtz gr, tr fri agg,
f-gd inf por, no fluor

Survey @ 2407.67m
Incl: 94.16deg Azi: 117.99deg

SANDSTONE: clr-trnsl, lt gy,
f-pred m gr, wl srtd,
sbang-pred sbrnd, tr wk sil
cmt, tr lt gy argil, mnr mtx
com carb flk, tr lith, pred lse
cln qtz gr, gd inf por, no fluor

Survey @ 2436.52m
Incl: 94.22deg Azi: 117.82deg

SANDSTONE: clr-trnsl, lt gy,
f-m gr, wl srtd, sbang-pred
sbrnd, tr wk sil cmt, tr lt gy
argil mtx, rr carb flks, tr lith,
pred lse cln qtz gr, gd inf por,
no fluor

SANDSTONE: clr-trnsl, lt gy,
vf-m gr, mod-wl srtd,
sbang-pred sbrnd, tr wk sil
cmt, mnr lt gy argil mtx, mnr
carb frag, tr lith, pred lse cln
qtz gr, gd inf por, no fluor

SANDSTONE: clr-trnsl, pl
gy-off wh, m-mnr f gr, wl srtd,
sbang-sbrnd, wk sil cmt, mnr
off wh-pl gy argil mtx, com
carb frag, rr lith, gen lse cln
gr, gd inf por, no fluor

SANDSTONE: clr-trnsl, pl gy,
m-occ f, rr crs, mod wl srtd,
sbang-sbrnd, occ ang, wk sil
cmt, rr pl gy argil mtx, com
carb frag, rr pyr nod, rr lith,
gen lse cln gr, gd inf por, no
fluor

SILTSTONE: pl gy, mnr m gy,
argil, rr aren, occ carb spks &
frags, disp-sft, amor, rr sblky

Netherby 1DW1 reached
216mm (8 1/2") hole section
TD @ 2517.00m MDRT on
12/08/2008 @ 01:30hrs

FORMATION EVALUATION LOG

WOB	LITHOLOGY %	INTERPRETED LITHOLOGY	RESISTIVITY	CHROMATOGRAPH	CALC	REMARKS
<div style="text-align: center;"> 10 20 30 40 ROP </div>	MD meters 1:500	INTERPRETED LITHOLOGY	Resistivity (shallow) 2 20 200 OHMM	Total Gas 1 10 100 1000 unit	CUT FLUORESCENCE DIRECT FLUORESCENCE PFG PFG	
<div style="text-align: center;"> 200 20 Gamma </div>			Resistivity (medium) 2 20 200 OHMM	Methane Ethane		
<div style="text-align: center;"> 50 100 150 200 GAPI </div>			Resistivity (deep) 2 20 200 OHMM	Propane i-Butane i-Pentane n-Butane n-Pentane		
			100 1000 10000 100000 ppm			